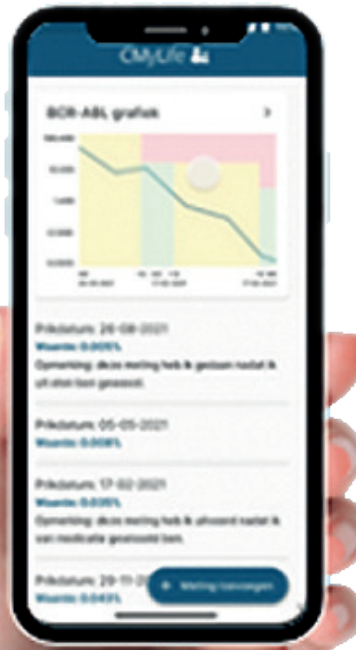


# THE DUTCH WAY PATIENTS FIRST



CLINICAL DECISION SUPPORT SYSTEM (CDSS)  
PROTOTYPE DYNAMIC INFORMED CONSENT  
PROTOTYPE B1-LANGUAGE LEVEL  
MONITORING SIDE EFFECTS  
SHARED DECISION MAKING  
CVD PREDICTION MODEL  
HEMATOLOGY APP  
CML PROM APP



## FINAL REPORT CMYGUIDELINE 2024



Scan this QR-code for more information about the Final Report of the CML guideline 2024



Our CML-advocates  
Jenny Borst  
and Tarynn Oei

In cooperation with, among others:



Nederlandse Vereniging voor Hematologie

Jenny Borst, patient representative  
Hematon  
“CMYGuideline is a unique collaboration between patients, healthcare providers and researchers in Europe, focused on innovation in hematological care”

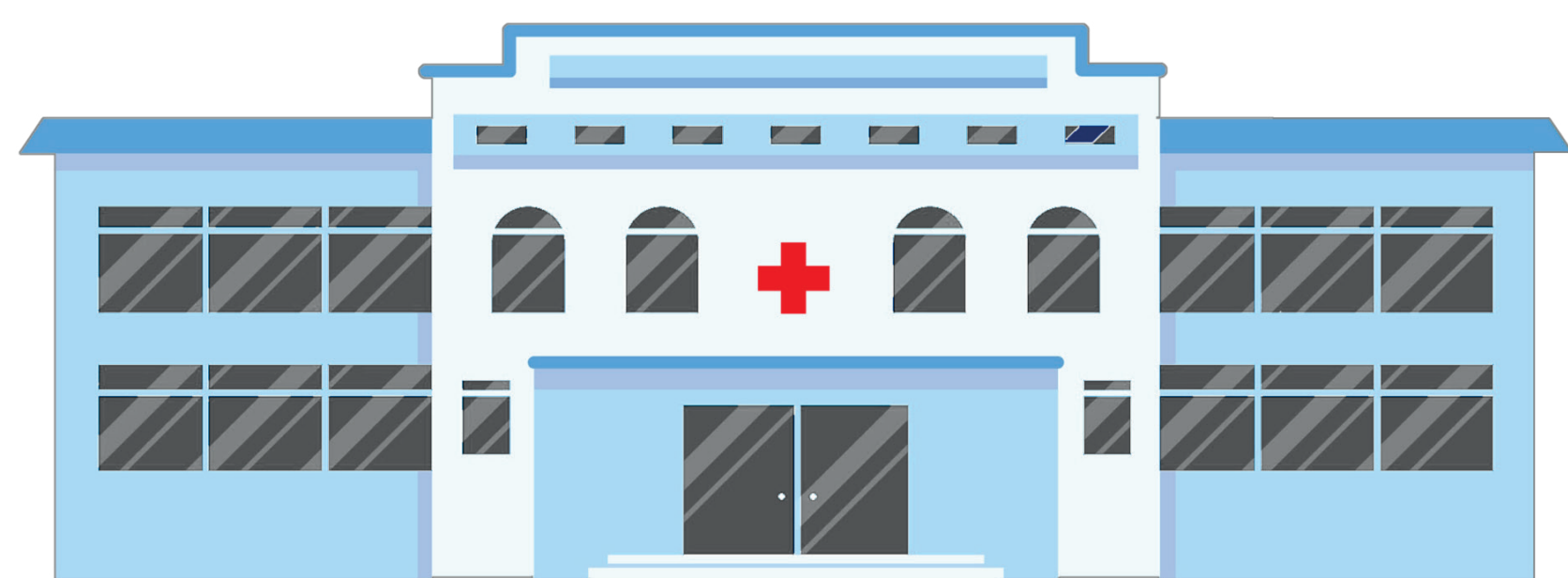
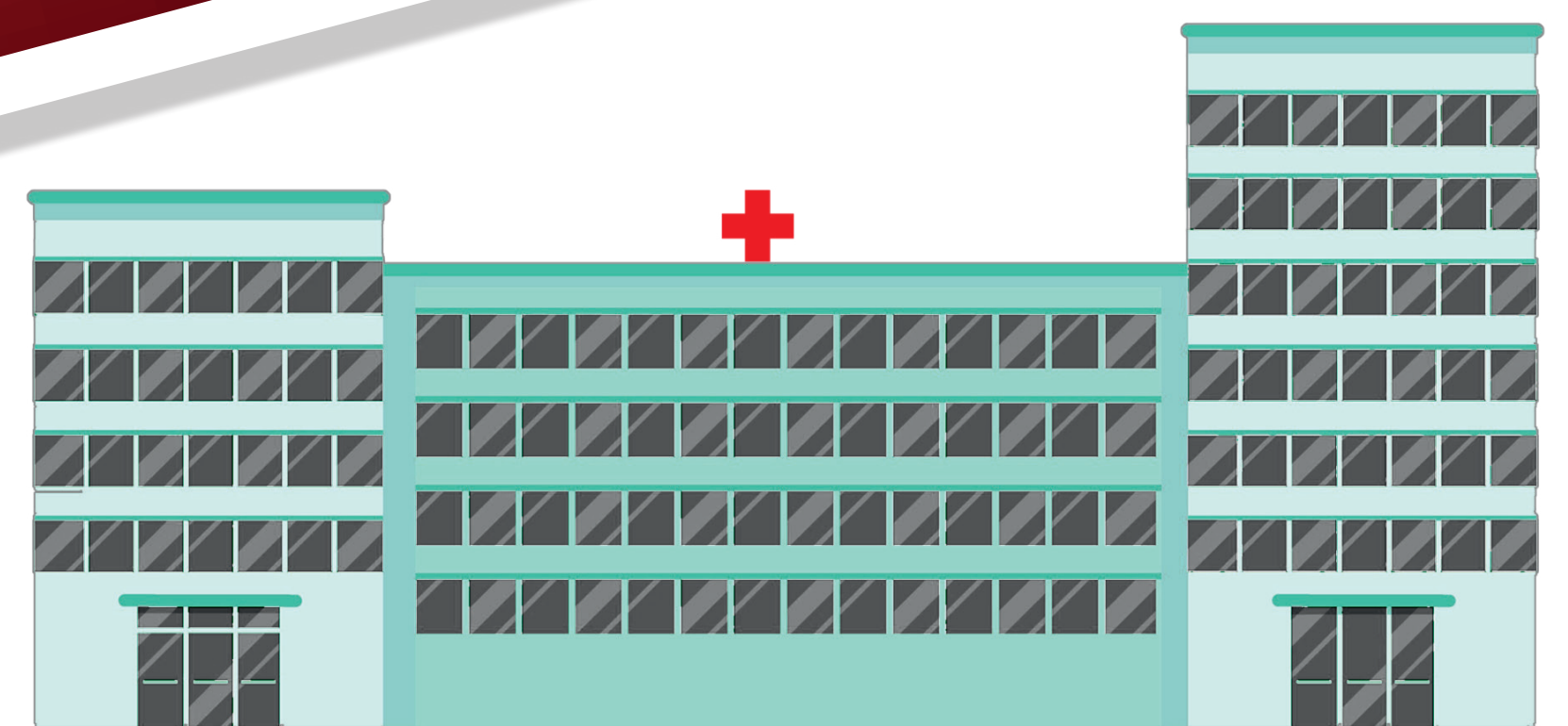
To realize our vision, where the patient is central and both self-reliance and co-reliance are encouraged, we focus on leveraging digital tools to enhance patient control while reducing the workload healthcare



Platform for Innovative  
E-health Solutions



Additionally, we continuously optimize medical guidelines using “real world data. This direction is reinforced by the Integrated Care Agreement: care at home when possible, independently when possible, and digitally when possible. In this context we launched the CMY-Guideline project in 2020.



Design: Bert van den Breek / Netherlands



CML ADVOCACY - LEARN, SHARE, GROW  
23<sup>RD</sup> INTERNATIONAL CONFERENCE FOR  
ORGANISATIONS REPRESENTING PATIENTS  
WITH CML

